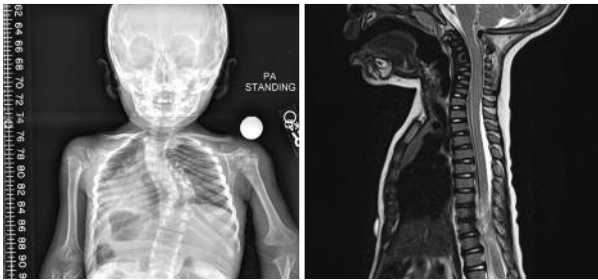


HOSPITAL  
FOR  
**SPECIAL  
SURGERY**



# Skeletal Dysplasia:

A MULTI-DISCIPLINARY APPROACH TO CARE

**MAY 20, 2011**

## LOCATION

Richard L. Menschel Education Center  
Hospital for Special Surgery  
New York City  
[www.hss.edu/cme](http://www.hss.edu/cme)

Sponsored by Hospital for Special Surgery Office of Continuing Medical Education

**CME** Designated for a maximum of 5.5  
AMA PRA Category 1 Credits™

[www.hss.edu/cme](http://www.hss.edu/cme)

*Programs Promoting  
Musculoskeletal Health*

HSS Education Division



HOSPITAL  
FOR  
**SPECIAL  
SURGERY**

Hospital for Special Surgery  
535 East 70th Street  
New York, NY 10021



# Skeletal Dysplasia:

## A MULTI-DISCIPLINARY APPROACH TO CARE

MAY 20, 2011

Sponsored by Hospital for Special Surgery Office of Continuing Medical Education

### LOCATION

Hospital for Special Surgery  
Richard L. Menschel Education Center  
535 East 70th Street, 2nd Floor  
(between York Avenue and FDR Drive)  
New York City

### STATEMENT OF NEED

There are over 350 distinct types of skeletal dysplasias, a heterogeneous group of genetic disorders characterized by differences in the size and shape of the limbs, trunk, and/or skull that often affect stature in a significant number of individuals. The extreme variability among the different types of dysplasia presents a challenge to orthopaedists, primary care physicians, radiologists, medical geneticists, physician assistants, nurse practitioners, rehabilitation therapists, physical therapists, social workers, nutritionists, genetic counselors, occupational therapists, physiatrists, pediatricians, medical students, residents and fellows. Specific topics that need to be addressed are genetic diagnosis, medical management, surgical intervention (when is surgery needed and how can it be done as safely as possible), morbidities of obesity, and psychosocial impact. As a result of participation in this course, participants from a wide variety of disciplines will understand how to work together to provide appropriate multi-disciplinary care to patients with skeletal dysplasia.

### TARGET AUDIENCE

This activity is targeted to orthopaedists, primary care physicians, radiologists, medical geneticists, physician assistants, nurse practitioners, rehabilitation therapists, physical therapists, social workers, nutritionists, genetic counselors, occupational therapists, physiatrists, pediatricians, medical students, residents and fellows.

### OBJECTIVES

HSS activities are intended to improve the quality of patient care and safety. At the conclusion of the course, the participant should be able to:

- Conduct proper examinations of patients with dysplasia and accurately assess orthopaedic function as it impacts patients' daily activities.
- Identify and address psychological and social issues faced by patients and provide patients with coping techniques and pain management referrals.
- Understand and recommend appropriate nutritional requirements, portion sizes, dietary supplements and physical activity plans for patients with dysplasia.
- Appropriately refer patients for pathology and genetic counseling services.
- Systematically review the X-rays and imaging to correctly diagnose dysplasia.

### ACCREDITATION

Hospital for Special Surgery is accredited by the Accreditation Council for Continuing Medical Education to provide continuing medical education for physicians.

Hospital for Special Surgery designates this educational activity for a maximum of 5.5 AMA PRA Category 1 Credits™. Physicians should only claim credit commensurate with the extent of their participation in the activity.

The AMA has determined that physicians not licensed in the United States but who participate in this CME activity are eligible for AMA PRA Category 1 Credits™.

Genetic Counselor CEUs: This event has been submitted to the National Society of Genetic Counselors (NSGC) for approval of Category 1 CEUs. The American Board of Genetic Counseling (ABGC) accepts CEUs approved by NSGC for purposes of recertification. Approval for the requested CEUs and Contact Hours is currently pending.

### FACULTY DISCLOSURE

In accordance with the Accreditation Council for Continuing Medical Education's Standards for Commercial Support, all CME providers are required to disclose to the activity audience the relevant financial relationships of the planners, teachers and authors involved in the development of CME content. An individual has a relevant financial relationship if he or she has a financial relationship in any amount occurring in the last 12 months with a commercial interest whose products or services are discussed in the CME activity content over which the individual has control. It is the policy of Hospital for Special Surgery to disclose all financial relationships that planners, teachers and authors have with commercial interests.

### SPECIAL NEEDS

Hospital for Special Surgery is accessible for individuals with disabilities or special needs. Participants with special needs are asked to contact the Office of Continuing Medical Education at 212.606.1812.

Go to [www.hss.edu/cme](http://www.hss.edu/cme) for a complete calendar of scheduled CME activities.



## AGENDA

- 8:30AM** Registration and Continental Breakfast
- 9:00AM** Introduction and Welcome  
*Cathleen L. Raggio, MD; Jessica G. Davis, MD, FACMG*
- 9:05AM** Diagnosis, Laboratory Analysis and Molecular Genetic Work-Up of Skeletal Dysplasia  
*Jessica G. Davis, MD, FACMG; Erin M. Carter, MS, CGC; Edward F. DiCarlo, MD*
- 9:45AM** Preparing to Bring a Patient to Surgery: Orthopaedic Management and Surgical Considerations  
*Cathleen L. Raggio, MD*
- 9:55AM** Social Work Perspective For Patients: Addressing Chronic Pain and Coping With Daily Life For Patients With Skeletal Dysplasias  
*Lorraine Montuori, LMSW, LCSW*
- 10:15AM** Q&A
- 10:25AM** Break
- 10:45AM** Pediatric Spine Surgery in Skeletal Dysplasia  
*William G. Mackenzie, MD*
- 11:15AM** Pediatric Neurosurgery in Skeletal Dysplasia  
*Mark M. Souweidane, MD*
- 11:30AM** Adult Spine Surgery in Skeletal Dysplasia  
*James C. Farmer, MD*
- 11:45AM** Q&A
- 12:00PM** Lunch
- 1:00PM** Breakout/Workshop Sessions  
Three 30-minute sessions. Participants will rotate between sessions in the following small groups:
- Physical Exam: How to Examine a Patient, Including Orthopaedic, Neurology, and Genetic Evaluation**  
*Jessica G. Davis, MD, FACMG; Cathleen L. Raggio, MD; William G. Mackenzie, MD*
- Radiographic Imaging: How to Read an X-ray/Skeletal Survey**  
*Bernard Ghelman, MD; Paula W. Brill, MD*
- Nutrition and Physical Therapy Guidelines for Patients with Skeletal Dysplasias**  
*Deborah McInerney, MS, RD, CDN; Frances Baratta-Ziska, PT, MS, PCS*
- 3:00PM** Review of Submitted Cases From Participants  
Apply what was learned in the morning lecture sessions and the afternoon breakout workshops by using question/answer quizzes with participants guided by the submitted cases.
- 4:00PM** Adjourn

## FACULTY

### ACTIVITY CO-DIRECTORS

**Jessica G. Davis, MD, FACMG**  
Associate Attending Pediatrician  
Hospital for Special Surgery  
Associate Attending Pediatrician  
NewYork-Presbyterian Hospital  
Co-Director, Kathryn O. and Alan C. Greenberg Center for Skeletal Dysplasias at HSS  
Associate Professor of Clinical Pediatrics  
Weill Cornell Medical College

**Cathleen L. Raggio, MD**  
Assistant Attending  
Orthopaedic Surgeon  
Hospital for Special Surgery  
Co-Director, Kathryn O. and Alan C. Greenberg Center for Skeletal Dysplasias at HSS  
Assistant Professor of Clinical Orthopaedic Surgery  
Weill Cornell Medical College

### GUEST FACULTY

**Paula W. Brill, MD**  
Attending Radiologist  
NewYork-Presbyterian Hospital  
Professor of Radiology  
Professor of Radiology in Pediatrics  
Weill Cornell Medical College

**William G. Mackenzie, MD**  
Department Chair  
Department of Orthopaedics  
Nemours A.I. duPont Hospital for Children  
Wilmington, DE

**Mark M. Souweidane, MD**  
Vice Chairman of Neurological Surgery  
Director of Pediatric Neurological Surgery  
Professor, Neurological Surgery and Pediatrics  
Weill Cornell Medical College  
New York, NY

### HSS PROGRAM COORDINATOR

**Casey Reisner**  
Professional Education Events Coordinator  
Education Division  
Hospital for Special Surgery

### HSS FACULTY

**Frances Baratta-Ziska, PT, MS, PCS**  
Physical Therapist  
Hospital for Special Surgery

**Erin M. Carter, MS, CGC**  
Clinical Coordinator and Genetic Counselor  
Hospital for Special Surgery

**Edward F. DiCarlo, MD**  
Associate Attending Pathologist  
Hospital for Special Surgery  
Associate Professor of Clinical Pathology and Laboratory Medicine  
Weill Cornell Medical College

**James C. Farmer, MD**  
Associate Attending Orthopaedic Surgeon  
Hospital for Special Surgery  
Associate Professor of Clinical Orthopaedic Surgery  
Weill Cornell Medical College

**Bernard Ghelman, MD**  
Attending Radiologist  
Hospital for Special Surgery  
Associate Attending Radiologist  
NewYork-Presbyterian Hospital  
Associate Professor of Radiology  
Weill Cornell Medical College

**Deborah McInerney, MS, RD, CDN**  
Nutritionist  
Hospital for Special Surgery

**Lorraine Montuori, LMSW, LCSW**  
Child Life Coordinator  
Hospital for Special Surgery

**HSS SERVICE CHIEFS**

**Oheneba Boachie-Adjei, MD**  
Chief, Scoliosis Service  
Attending Orthopaedic Surgeon  
Hospital for Special Surgery  
Attending Orthopaedic Surgeon  
NewYork-Presbyterian Hospital  
Associate Attending Orthopaedic Surgeon, Memorial Sloan-Kettering Cancer Center  
Professor of Orthopaedic Surgery  
Weill Cornell Medical College

**Roger F. Widmann, MD**  
Chief, Pediatric Orthopaedic Surgery  
Associate Attending Orthopaedic Surgeon  
Hospital for Special Surgery  
Associate Professor of Clinical Orthopaedic Surgery  
Weill Cornell Medical College

## Two easy ways to register!

- 1 Register and pay online at [www.hss.edu/cme](http://www.hss.edu/cme)
- 2 Register by mail using the registration form.

### Payment by mail

Make check payable to  
Hospital for Special Surgery  
Mail registration form to:  
Hospital for Special Surgery  
Professional Education Department  
Education Division  
535 East 70th Street  
New York, NY 10021

### Confirmations

All registered participants will receive a confirmation via e-mail.

### Refund policy

A handling fee of \$25 is deducted for cancellation. Refund requests must be received by mail one week prior to the course. No refund will be made thereafter.

### For more information, please contact

Casey Reisner  
Professional Education  
Events Coordinator  
Education Division  
Hospital for Special Surgery  
tel: 212.606.1812  
email: [reisnerc@hss.edu](mailto:reisnerc@hss.edu)

### Accommodations

Space is limited and early reservations are recommended. For local accommodations, go to [www.hss.edu](http://www.hss.edu) and click on: For Patients, Patient Information, Neighborhood Directory, Accommodations.

### Transportation

**AIRPORT:** LaGuardia (LGA) is 8 miles northeast of the city. Kennedy International (JFK) is 15 miles southeast of the city. Newark International (EWR) is 16 miles southwest of the city.

**BUS:** M72, M31 stop at East 69th Street and York Avenue

**SUBWAY:** nearest line is the 6 train stop at East 68th Street and Lexington Avenue

**CAR (FDR Drive):** Driving south, exit at 71st Street. Driving north, exit at 63rd Street. Continue on York Avenue.

**PARKING:** Parking garages are located in the area.

All rights reserved.  
© 2011 Hospital for Special Surgery  
Education Publications & Communications

# Skeletal Dysplasia:

## A MULTI-DISCIPLINARY APPROACH TO CARE

MAY 20, 2011

Please print.

DATE

NAME

DEGREE

TITLE

HOSPITAL AFFILIATION

E-MAIL ADDRESS

ADDRESS

CITY/STATE/ZIP

DAYTIME PHONE

FAX NUMBER

AMOUNT ENCLOSED

American Express     MasterCard     Visa     Check Enclosed

CREDIT CARD #

EXP. DATE

SIGNATURE

Check here to receive the HSS eNewsletter. Please include your email address above.

### REGISTRATION FEES

Physicians	\$275
Non-physicians	\$225
Genetic Counselors	\$185
Residents/Fellows/Medical Students	\$75

**For on-site registration, please add \$25 to the appropriate category above. Please call first to be sure space is available.**

Registration fees include breakfast, lunch, lecture handouts and CME credits. All registered participants will receive a confirmation via e-mail.

Please note: Registration will not be processed unless accompanied by payment.



Hospital for Special Surgery is a participating organization of the Bone and Joint Decade. Hospital for Special Surgery is an affiliate of NewYork-Presbyterian Healthcare System and Weill Cornell Medical College.